

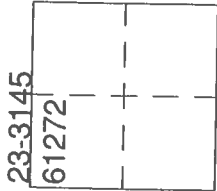
PWFB 1116

1933

## CORNER RECORD

Agency Index \_\_\_\_\_

Document Number \_\_\_\_\_

City of CULVER CITYCounty of LOS ANGELES, CaliforniaBrief Legal Description MONUMENT PRESERVATION AT WASHINGTON BOULEVARD AND OVERLAND AVENUE

## CORNER TYPE

- ☐ Government Corner      ☒ Control  
☐ Meander      ☐ Property  
☐ Rancho      ☐ Other

Date of Survey 1/18/19

## COORDINATES (Optional)

N. \_\_\_\_\_ E. \_\_\_\_\_

Elevation \_\_\_\_\_

Units ☐ Metric ☐ U.S. Survey Foot

Horizontal Datum \_\_\_\_\_

Zone \_\_\_\_\_ Epoch Date \_\_\_\_\_

Vertical Datum \_\_\_\_\_

☐ Complies with Public Resources Code §§8801-8819☐ Complies with Public Resources Code §§8890-8902PLS Act Ref: ☐ 8765 (d) ☒ 8771 ☐ 8773 ☐ Other:

Corner/Monument: ☒ Left as found ☐ Established ☐ Rebuilt ☒ Pre-Construction  
☐ Found and tagged ☒ Reestablished ☐ Referenced ☒ Post-Construction

Narrative of corner identified and monument as found, set, reset, replaced, or removed:  
☒ See sheet #2 for description (s):

## SURVEYOR'S STATEMENT

This Corner Record was prepared by me or under my direction in conformance with

the Professional Land Surveyors' Act on 3/2, 2021.Signed Eric W. Metz P.L.S. or R.C.E. No. L.S. 9198

## COUNTY SURVEYOR'S STATEMENT

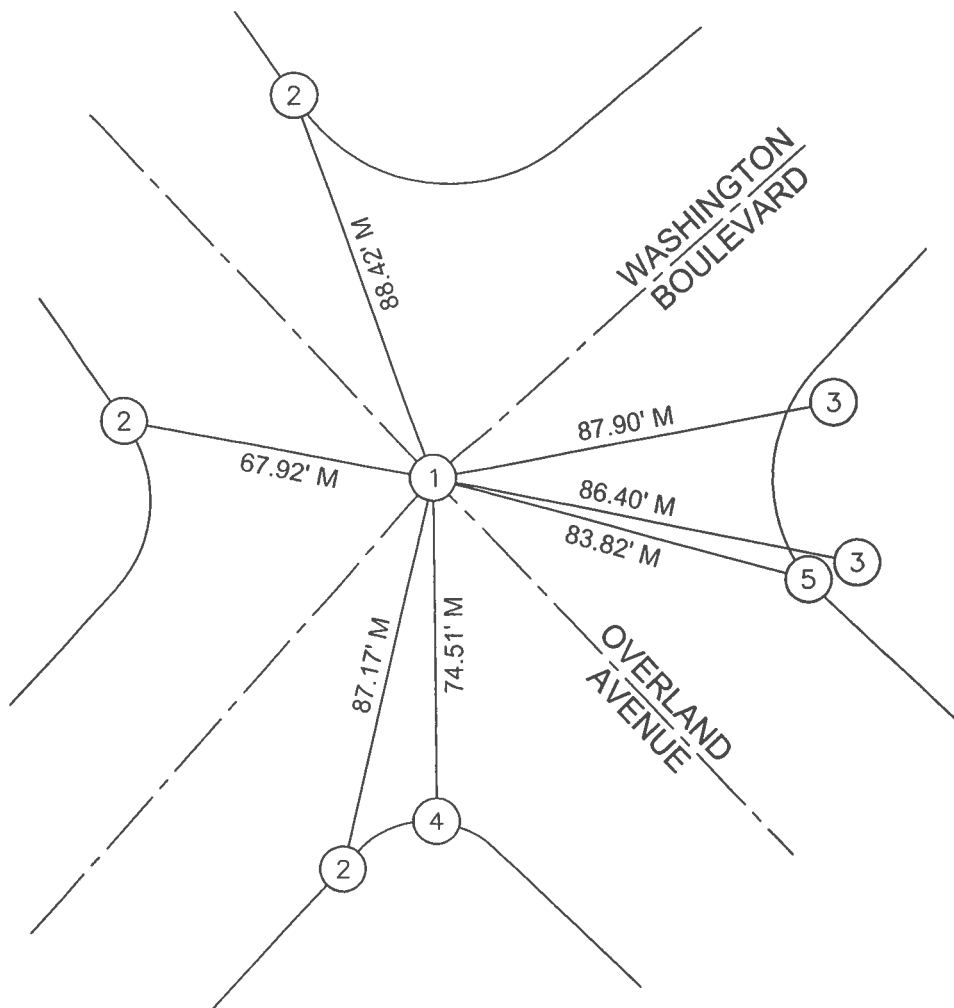
This Corner Record was received 10-9-2023and examined and filed OCT 03 2024Signed J. Roepel P.L.S. or R.C.E. No. 7289Title DEPUTY COUNTY SURVEYOR

County Surveyor's Comment \_\_\_\_\_



**REFERENCES**

M = MEASURED DISTANCE



NTS

**MONUMENT NOTES**

- ① FOUND PK NAIL IN CONCRETE, NO REF., SET LEAD, TACK & TAG STAMPED LS 9198 AFTER CONSTRUCTION
- ② SET LEAD, TACK & TAG STAMPED LS 9198 IN T.C.
- ③ FOUND LEAD & TACK IN B.W., NO REF.
- ④ FOUND LEAD, TACK & TAG, STAMPED CC ENGR, NO REF.
- ⑤ FOUND LEAD & TACK IN T.C., NO REF.

THE PURPOSE OF THIS RECORD IS TO DOCUMENT THE PERPETUATION OF FOUND MONUMENT(S) PURSUANT TO THE PLS ACT SECTION 8771.  
17-VSI-446